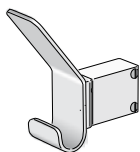


ELEMENTS BATHROOM ACCESSORIES

Range of accessories for SOHO

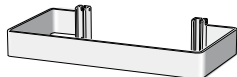


Hanger SOHO

Can be installed between the elements of the SOHO Vertical Single/ Double model even after the wall installation.

Chrome-plated Version code ZASHG#APCRO

Chrome Plated Finish



Towel rail L. 32.5 cm for SOHO vertical single (SHV) with 5 elements

The Towel rail can be installed either before or after the installation of the wall type radiator.

Chrome-plated Version code ZASHG#PS005CRO

Chrome Plated Finish



Towel rail L. 46,0 cm for SOHO vertical single (SHV) with 7 elements

The Towel rail can be installed either before or after the installation of the wall type radiator.

Chrome-plated Version code ZASHG#PS007CRO

Chrome Plated Finish



Towel rail L. 53,0 cm for SOHO vertical single (SHV) with 8 elements

The Towel rail can be installed either before or after the installation of the wall type radiator.

Chrome-plated Version code ZASHG#PS008CRO

Chrome Plated Finish

Range of accessories for SQUARE



CIRCLE - Multi-functional accessory for SQUARE model.

Can be installed in any SQUARE model (vertical, Horizontal and COMPOSITION) even after the wall installation.

for model SQV2 >2014* Coloured Version code ZASQ2#IDR
for model SQUARE electric Coloured Version code ZASQ2#ELE

Colour Category
Colour Category

* > 2014 refers to the new SQUARE model
< 2013 refers to the SQUARE model constructed up to the time the price-list came into force

ELEMENTS BATHROOM ACCESSORIES

Range of accessories for TRAME HORIZONTAL L 52.5 cm, 67 cm and 96 cm

Hanger - single for TRAME model



Can be installed between the elements of the TRAME model but only near the manifolds.

Chrome plated version TRAME 14 code ZATRG#AP14CRO
Chrome plated version TRAME 20 code ZZATRG#AP20CRO
Chrome plated version TRAME 28 code ZATRG#AP28CRO

Chrome Plated Finish
Chrome Plated Finish
Chrome Plated Finish

Towel rail L. 50 cm for model TRAME HORIZONTAL L. 52.5 cm



Can be installed between the elements of the TRAME Horizontal model (width 52.5 cm) even after the wall installation.

Chrome plated version TRAME 14 code ZATR14G#PS525CRO
Chrome plated version TRAME 20 code ZATR20G#PS525CRO
Chrome plated version TRAME 28 code ZATR28G#PS525CRO

Chrome Plated Finish
Chrome Plated Finish
Chrome Plated Finish

Towel rail L. 65.0 cm for model TRAME HORIZONTAL L. 67.0 cm



Can be installed between the elements of the TRAME Horizontal model (width 67.0 cm) even after the wall installation.

Chrome plated version TRAME 14 code ZATR14G#PS670CRO
Chrome plated version TRAME 20 code ZATR20G#PS670CRO
Chrome plated version TRAME 28 code ZATR28G#PS670CRO

Chrome Plated Finish
Chrome Plated Finish
Chrome Plated Finish

Towel rail L. 94.0 cm for model TRAME HORIZONTAL L. 96.0 cm



Can be installed between the elements of the TRAME Horizontal model (width 96.0 cm) even after the wall installation.

Chrome plated version TRAME 14 code ZATR14G#PS960CRO
Chrome plated version TRAME 20 code ZATR20G#PS960CRO
Chrome plated version TRAME 28 code ZATR28G#PS960CRO

Chrome Plated Finish
Chrome Plated Finish
Chrome Plated Finish

SQUARE ACCESSORIES



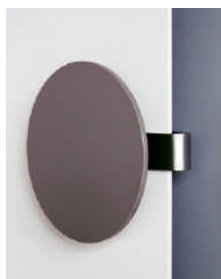
SQUARE ACCESSORIES



Towel Rail for Square model, Chrome-plated finish.

It can be installed even after the wall installation of the radiator.

cod. ZASQV#PS031	Width 32,5 cm x 4,5 cm x Square 31 cm wide
cod. ZASQV#PS046	Width 47,5 cm x 4,5 cm x Square 46 cm wide
cod. ZASQV#PS056	Width 57,5 cm x 4,5 cm x Square 56 cm wide
cod. ZASQV#PS071	Width 72,5 cm x 4,5 cm x Square 71 cm wide



Bathrobe / Towel rail mod. CIRCLE in aluminum.

CIRCLE – Multi-functional accessory for SQUARE model.

It can be installed in any SQUARE model (vertical, horizontal and composition) even after the wall installation of the radiator.

cod. ZASQ2#IDR	For Square hydraulic version	COLOURED finish
cod. ZASQ2#ELE	For Square electric version	COLOURED finish



GVR – Remote Valve Assembly

cod. GVR#	Remote Valve Assembly	CHROMED finish
cod. GVR#	Remote Valve Assembly	COLOURED finish

The valve and lockshield assembly for recessed remote connection can be installed at a maximum distance of 6 m from the radiator